

Maullygn's
Raw & Quilt

Kit basics:

Our kit consists of laser-cut wood components. Many of the parts are backed with a peel and stick coating to ease assembly. Assembly is not difficult, but being such an ornate kit be prepared to spend a little time on assembly.

You will need a few basic tools and supplies to build the kit. A sharp hobby knife and white glue are all that is required for most of the assembly. Some modelers might find a single-edged razor blade helpful.

Components are held on the larger sheets with small tabs. Use a sharp knife or razor to remove the parts by cutting through the tabs. We recommend that you remove the parts as you use them. It's easier to keep track of them this way....

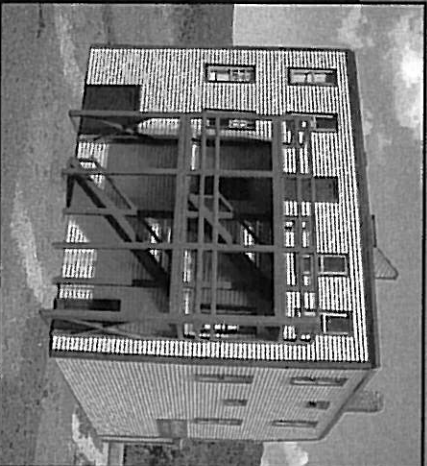
We use white glue (Elmer's or similar) for the wood-to-wood joints. Yellow carpenter's wood glue or ACC ("super glue") can also be used. It can be helpful to use bits of masking tape to hold corners together while the glue dries.

The peel and stick adhesive allows the part locations to be adjusted slightly when first applied, but will set up to a permanent bond in a few hours.

Painting and weathering tips:

We find it easier to paint many of the parts before or during assembly. If you choose to use water-based paints please be sure to paint both sides of the wood siding to minimize warping. Don't panic if the wood warps while the paint is still wet, in most cases it will straighten out after the paint dries.

This building is typical of many commercial buildings across the country. There is plenty of trim which certainly offers all sorts of possibilities for multi-color schemes. Take a few minutes and look around on the web (not ZOO long, you want to have time to build the kit!) for inspiration.



LASER = ART Structures

by Branchline Trains

