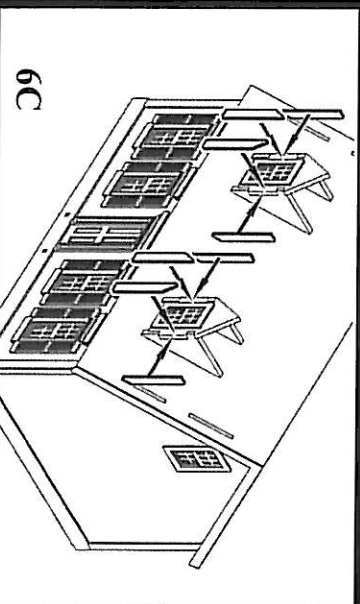


LASER-ART STRUCTURES by BRANCHLINE TRAINS



6C

6C) Apply the corner trim. The front pieces will overlap the sides.

6D) Complete the dormers by gluing the sub roof panels into place as shown and adding the trim pieces to them as shown.

Stairs:

7) Glue stair stringers into the openings on the front and rear walls. Now apply the treads to each set of stringers.

Paper roofing:

8) Apply the roofing shingles using white glue. Start at the bottom of each roof edge, gluing each strip of roof paper overlapping the previous row as you go up and staggering the joints between shingles as shown.

Cut some strips from the paper sheet and add roof caps to the peaks of the roof and into the valley of the dormer as shown. These can be painted to match the roof or painted a contrasting color to represent flashing as desired.

The completed shingles can then be painted and weathered as desired. We like to use a gray paint and dry brush lighter shades of color to pick up the highlights.

Chimney:

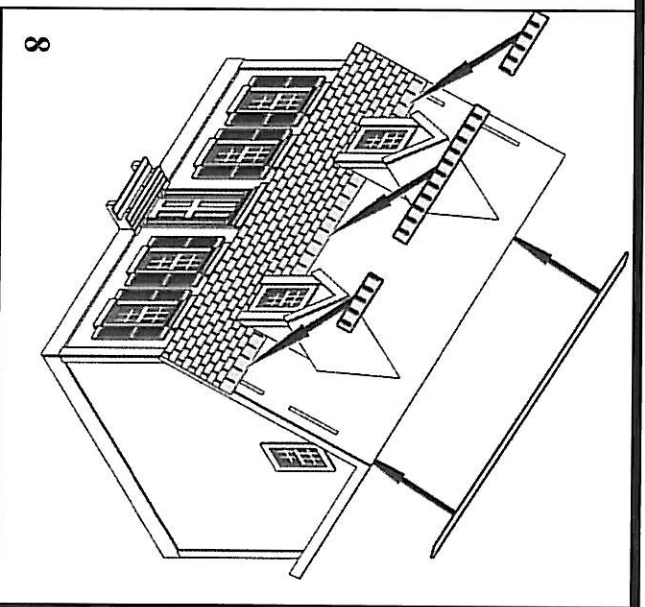
9) The resin chimney can be located wherever you feel it looks best. To mount the chimney either cut a hole into the roof and place the chimney inside or sand the base of the chimney to the proper angle and attach it directly to the roof with cement.

Your kit is now complete and ready for your layout. We hope you've enjoyed this kit. If you have any problems or comments, please contact us at:

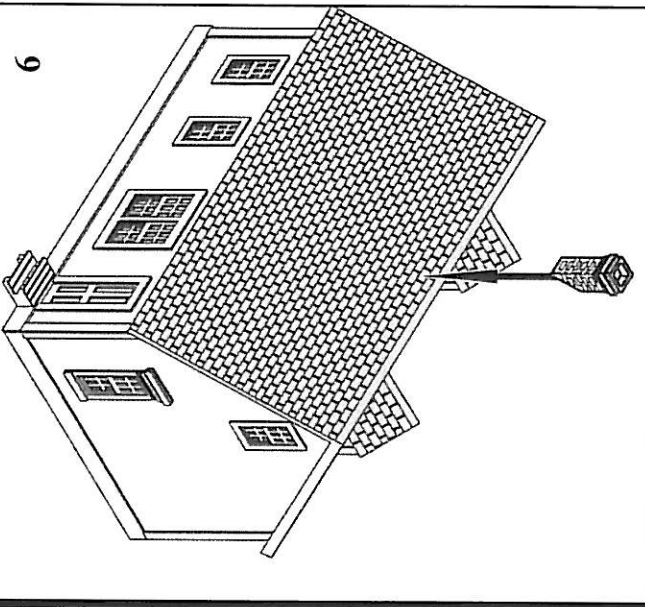
Branchline Trains

323 Park Ave.
East Hartford, CT, 06108

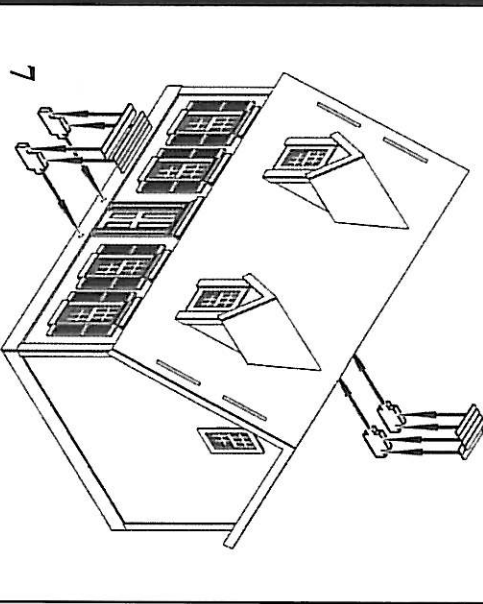
For a full list of our products, see our web site at www.branchline-trains.com



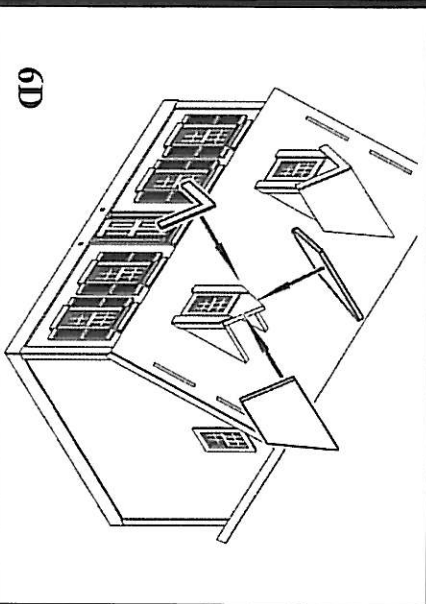
8



9



7



6D