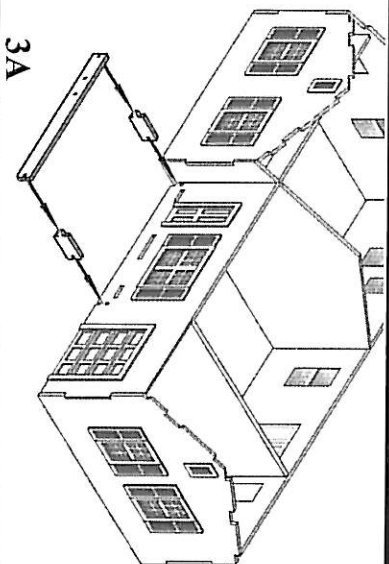


LASER-ART STRUCTURES by BRANCHLINE TRAINS



Front Porch:

- 3A) Glue the two short porch floor supports into the slots on the front walls as shown. Once they are in place glue on the front section to them.
- 3B) Now glue the flooring into the slots in the front wall and to the top of the floor supports.

Foundation:

- 4) Install the foundation stonework by removing the peel-and-stick backing from each piece and pressing it into place along the bottom edge of the walls.

Once in place, you can paint the stonework with a gray or brown paint. Spend a few minutes and pick out some of the individual stones with lighter and darker shades of your base color. Once this is dry follow with a wash of light gray or black to represent the mortar between the stones (Light gray will make the foundation appear newer, black older). Finally dry brush some light gray or tan highlights onto the stones.

Trim:

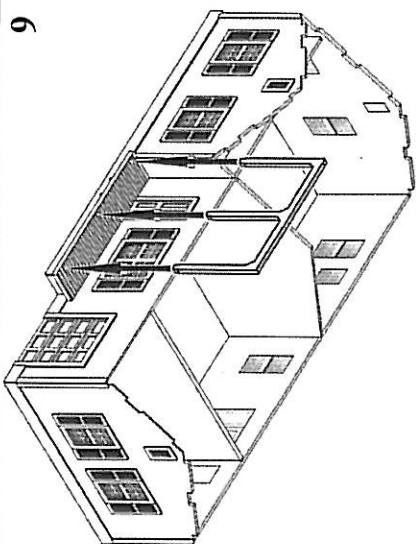
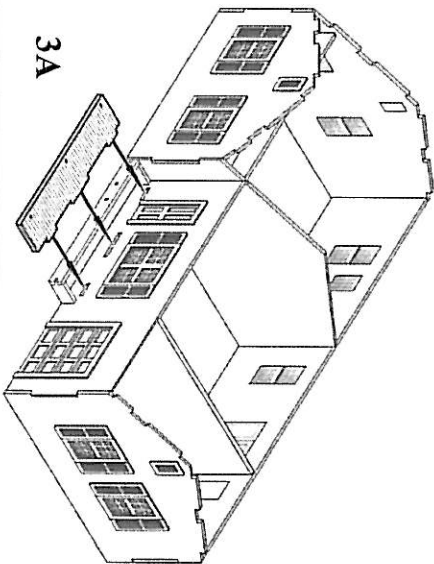
- 5) The corner trim is made up from two boards, one slightly wider than the other. Start by removing the backing from the thinner board and applying it flush with the edge of the wall. Now apply the remaining trim boards so that they overlap the edges of the narrow boards giving an even corner. Note that the corner boards are cut to match the roof line. Test fit each before removing the backing to make sure that it is correct.

Porch Posts:

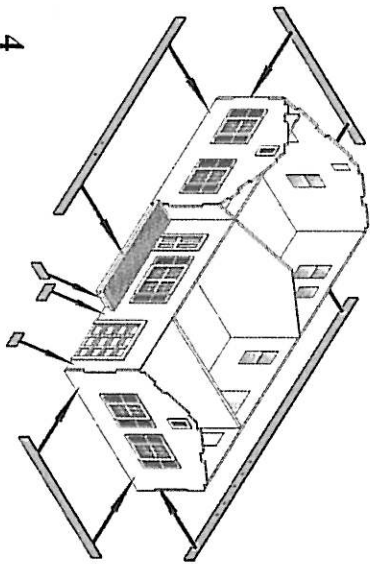
- 6) Glue the roof support into the three holes in the porch floor. Make sure they are straight and set aside to dry.

Subroofing and trim:

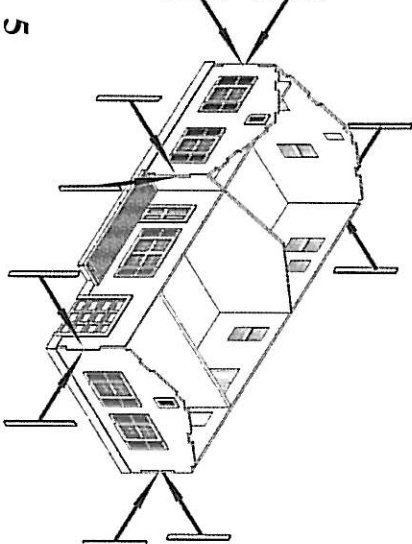
- 7A) Glue the two sub roof panels onto the tabs on the main walls.



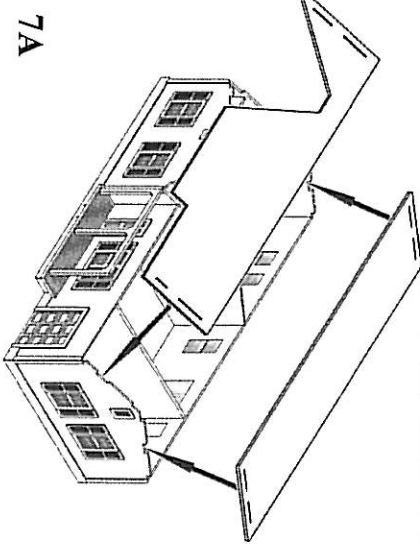
6



4



5



7A